

Line Flush (Out of date product)

Items required:

Bag in Box cleaning adapter

Bucket of clean, warm water

Tip

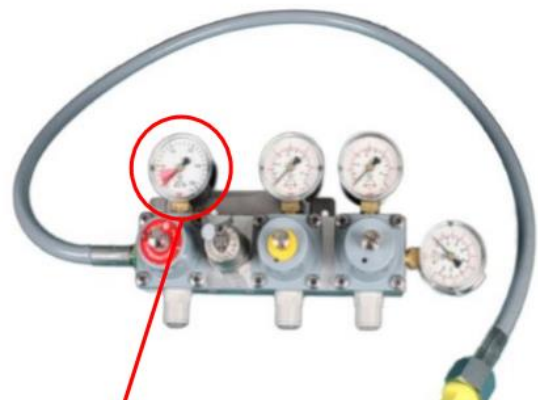
Ensure the Co2 bottle connected is on and has sufficient pressure showing on the contents gauge

Solution:

1. Disconnect the out of date bag in box
2. Attach the cleaning adapter to the bag in box connector for the affected line
3. Place the cleaning adapter and line into the warm water
4. Return to the bar, on your soft drink dispenser, hold down on the affected flavour until the product runs clear. (repeat for every dispenser installed)
5. Return to the cellar and connect a new (in date) bag in box to the line, making sure the connector is fully secured. (ensure this is the same flavour as the one you removed)
6. Return to the bar, hold down on the affected flavour until the product comes back through. (repeat for every dispenser)



Cut off the adapter from an empty bag in box to use as a cleaning adapter



A typical contents gauge will have a red segment. Ensure the needle is near or above this zone.